

Stockholm 2019-06-10

Information about accessibility at the Hotel Rival. Contact us at +46 (0)8 545 789 00 for assistance and more information.

Entrance to Hotel Rival

- Entrance from street with button for automatic door opening (in and out)



Hotel Rival's entrance and revolving door



1. Press button



2. Side door automatically opens (108cm wide)

For guests staying at the hotel:

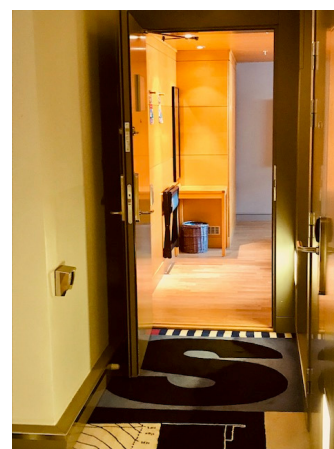
- Entrance to hotel reception with automatic door opening
- Entrance to elevators for hotel guests – automatic door opening
- Key card access in elevators at two levels
- Automatic door opening to our accessible hotel rooms



Entrance to reception



Guest elevator



Entrance to hotel room 85cm wide
Automatic door opening with key card

Hotel rooms



- Two alarm buttons in every bathroom
- Bathroom entrance 90cm wide
- Movable shower wall with stool, towel hanger at accessible height
- Low and wide bathroom counter with sink
- Light switches at a low height
- Toilets adjusted for accessibility with movable armrests
- Low, or no, thresholds
- Workspace with extra room for wheelchairs



- Telephones by the bed, on the desk and in the bathroom
- USB ports and power outlets on each side of the bed headboard
- Remote control for the TV and Blu-ray player
- No obstructing table legs or drawers at workspace

Access to conference rooms, theatre and restaurant



Elevator down to the Rivalen



Entrance to theatre



Elevator to bar and restaurant

- The Rivalen conference room is accessible from the hotel foyer via a disability access elevator, which opens automatically into the conference room. The room has wooden floors and no thresholds.
- Disability access to the Maria conference room is via another building. Please contact us at +46 (0)8 545 789 00 for further assistance. The door to the Maria conference room opens automatically.

Elevator and Restroom



Disability accessible elevator w/ automatic door opening



Elevator control panel at accessible height. Access till theatre, Rivalen, bars and bistro



Disability accessible restroom at entrance level

Access to theatre

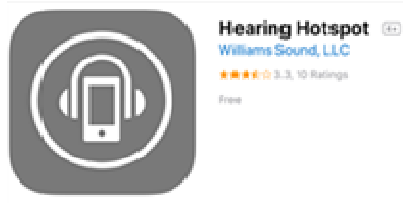
- The Rival Theatre can be accessed from the entrance foyer by a disability accessible elevator. Disability seating is available in the stalls only, not on the balcony.
- When purchasing tickets to concerts and performances, it is your responsibility to inform the ticket vendor that you require disability access seating and if you will be accompanied by someone or not. Pre-booking is required as disability access seating is limited.
- If you are participating in a conference or business event in the theatre, contact us as soon as possible so we can take the necessary measures to ensure your comfort.

Hearing loop system in the theatre for hearing impaired

- Neckloop hearing aid holders are available to take into the theatre as well as access to Hearings Hotspot. Connect to the open network called “Hörhjälp” with your telephone. Download the app Hearing HotSpot™ via Google Play or in the App Store and open the app in your telephone. Detailed information is available at the hotel reception.



Necklooper Telecoil Coupler



App Hearing Hotspot



Download via Apple/Google

Access to Watson's Bar, Bistro, Cocktail bar, Bistro bar

- Full access for guests with disabilities. Disability accessible elevator from entrance foyer to all public areas in the hotel. Guests staying at the hotel also have direct access from the bars and restaurant to the elevators to the hotel rooms.

Access to Café Rival (neighbouring building)

- Visit Café Rival!
- Access the Café Rival via the hotel's main entrance and Watson's Bar
- Approved disability access ramp
- Entrance to café 85cm wide



Indoor entrance to Café Rival